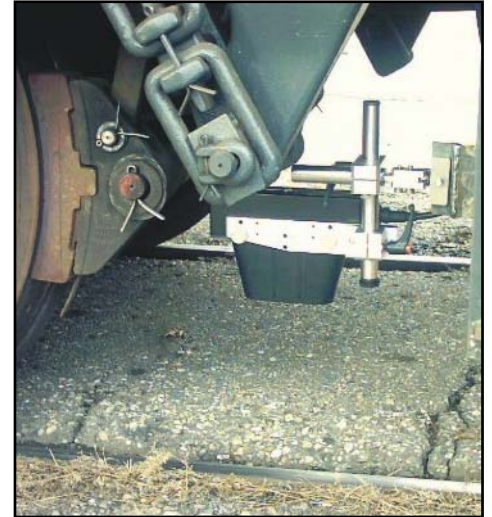


# CORREVIT® L-400™ RAIL

Non-Contact  
 Slip-Free Measuring  
 Optical Sensor

for  
**Measurement of Distance and Speed**

- Extended operating distance of 400 mm  $\pm$ 130 mm.
- Due to its extended working range, this sensor is ideally suited for application with rail vehicles using the track bed or - more precisely - the railhead surface as a reference.
- Wide speed range from 0.5 to 400 kph.
- Extremely high measuring accuracy\* – better than  $\pm$ 0.1% as a result of precise optical gratings and digital signal processing.
- Programmable standardized analog and digital signal outputs using the latest processor techniques, fast and easy calibration.
- Any required measurement quantity available.
- Easy operation and direct connection to a CORRSYS 3 D DAS-2AD 24 V or other evaluation systems.
- Negligible service and maintenance requirements as a result of durable technology.
- Tested and used under extreme environmental conditions.
- Combined with the CORRSYS 3D DAS-2AD 24 V System, the CORREVIT® L-400 RAIL is the ideal solution for precise brake path measurements.

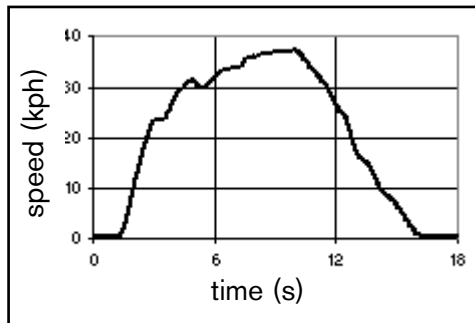


<b>Art. No.</b>	
<b>L400 longitudinal</b>	<b>11303</b>
<b>L400 long. + CAN</b>	<b>11305</b>
<b>L400 transversal</b>	<b>11304</b>
<b>L400 trans. + CAN</b>	<b>12494</b>

\* with calibration on the test surface

# CORREVIT® L-400 RAIL

The CORREVIT® L-400 Rail stands out due to its large working distance and operating range. This advantage makes the L-400 ideally suited for use with rail vehicles for measurements over evenly filled track bed or - even better - using the railhead surface as a reference (e.g. in snowy conditions).



## Typical Technical Specifications

### Performance Specifications

Speed range:	0.5 ... 400 kph
Distance resolution:	1.9 mm
Measurement deviation*:	<±0,1%
Working distance and range:	400 ± 130 mm

### Electronic Connector Output

Digital output 1 - distance $V_L$ :	1 ... 1000 pulses/m
Analog output 1 - longitudinal speed $V_L$ :	0 ... 10 V
Analog output 2 - acceleration a (optional):	-10 ... +10 V

**CAN Bus (optional):** CAN V2.0B

### System Specifications

Power requirement	11,5 ... 14.5 V; 50 W (12 V DC)
Temperature range	Operation: - 25 ... 50° C Storage: - 40 ... 85° C Relative Humidity: 5 ... 80% non condensing
System protection (mated connector):	IP 67
Dimensions of the sensor (l x w x h):	247 x 52 x 171 mm
Weight:	1350 g
Dimensions of the electronics (l x w x h):	212 x 144 x 53 mm
Weight:	940 g
Shock:	50 g half-sine, 6 ms
Vibration:	10 g, 10 ... 150 Hz

A serial interface on each of the sensor electronics enables connection to PC for automatic sensor identification, set-up and function control.

\*related to length (> 1000 m) and calibration on the test surface

CORREVIT® is a registered trademark of CORRSYS-DATRON Sensorysysteme GmbH  
C3D-D025-51-03-02E

**CORRSYS 3D**

Charlotte-Bamberg-Str. 6 • 35578 Wetzlar / Germany  
Tel. +49-(0)6441-20914-30 • Fax. +49-(0)6441-20914-14  
[www.corrsys3d.com](http://www.corrsys3d.com)

In a continuous effort to improve our products, CORRSYS 3D Sensors AG reserves the right to change specifications without prior notice.